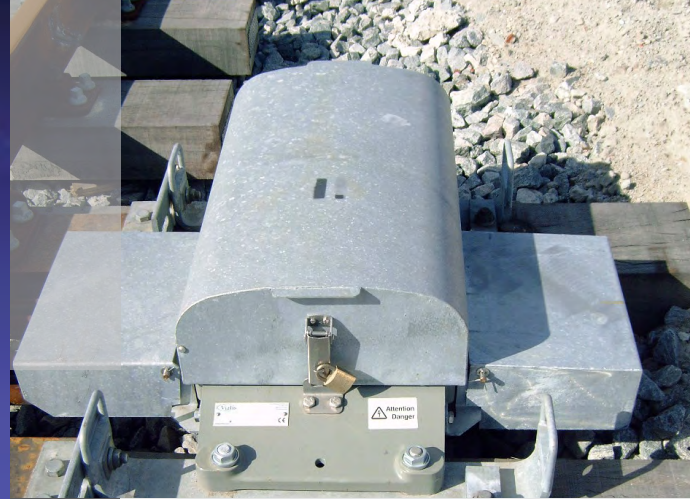


NSE2 and NSE2 HL Point Machines

There may be serious consequences when a point is not properly closed or not closed at all. With the Transport System Solutions NSE2 and NSE2 HL point machines, there is no need for concern. Transport System Solutions point machines are reliable, safe and low maintenance. We have supplied a large number of point machines to many countries in the world.

This product specification applies to both NSE2 and NSE2 HL point machines.



taking you
in the right
direction

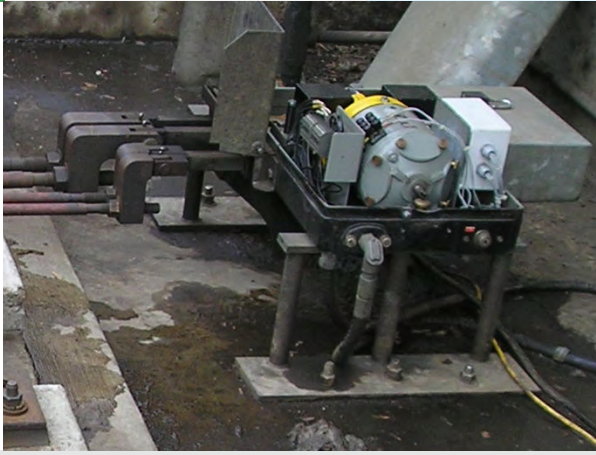
Made to keep on going

The NSE2 point machine is fitted with a maintenance-free sliding bar. Durability tests have proven that the sliding bar still works perfectly and shows virtually no wear after one million strokes. The NSE2 point machine's reliability and durability are significantly enhanced compared to other models. For example, the brass contact blocks are coated with a 3 mm silver tungsten top, preventing oxidation from isolating the contact points. The NSE2 point machine is also fitted with an Entelec terminal block that meets the Dutch NEN 1010 standard. To enhance safety, the connections to the motor are electrically insulated.

Durable down to the smallest detail

The Transport System Solutions NSE2 point machine is fitted with extremely durable ceramic sliding blocks. This material is extremely hard and resistant to abrasions, eliminating the need for greasing the sliding blocks. Our point machine requires maintenance only once every two years. The hot-dip galvanised cover is designed in such a way that moisture cannot enter the vital parts of the NSE2 point machine, preventing mechanical and electrical failures.

The NSE2 point machine is available in two types: the NSE2 is suitable for installation on wooden or concrete sleepers; the NSE2 HL is suitable for installation in steel hollow sleepers. Both are available with maintenance-free rods.



Rodding

Transport System Solutions also supplies various types of rodding. Point rodding forms the connection between the tongues of the turnout and point machines. Maintenance-free versions, supplied with high-quality ball joint heads, are also available. All point rods come with an adjustment function, so that the point can be fine-tuned on location.

- Low maintenance
- Extremely reliable
- Cost-effective
- Safe
- Available in two standard versions
- Available with or without rod sets

Specifications

These product specifications apply to both NSE2 and NSE2 HL point machines.

Electrical

Supply voltage	120 V AC single phase
Detection circuit	2 A up to 28 V DC 1 A up to 250 V AC
current at nominal load	max 5 A
Slip current	max 7 A
Isolation value (new)	50 MΩ (tested at 500 V DC for 10 min)
EMC compliant	Yes
Degree of protection	IP54

Mechanical

Stroke	120 mm
Throwing force/Load	3000 N - 5500 ± 500 N
Retention force	7.5 kN ± 0.5 kN (adjustable)
Running time for normal load	< 3 sec at nominal load
Blocking force	>> 10,000 N
Manual operation	Yes, with hand crank
Lifespan	Approx. 1,000,000 single strokes

Maintenance and servicing

In addition to supplying NSE2 point machines, Transport System Solutions also provides point machine maintenance. Our service operates on a national level and is available 24 hours a day. We can also service, maintain and supply spare parts for your point machines.

Would you like
to know more about
the services, products or projects of
Transport System Solutions?

Please contact our Sales Department
by sending an email to
info@transport-ss.com
or go to our website
www.transport-ss.com.

